



Auditors, Tax & Business Advisers

2nd April 2020

Folks,

Following on from our previous email last Friday we are attaching our Income Support Decision Tree which provides you with a framework on how to reach a decision on what options are available to you as an employer (both Limited Company and Sole Trader), employee and self employed person.

Over the last 6 days there have been a number of clarifications from revenue (as late as today) and we are setting out the main items below:

1. Revenue have confirmed that the subsidy amounts will be taxable in the beneficiaries hands. This won't happen until 2021 and the likelihood is that it will be through a reduction in tax credits over a year or longer.
2. Employers are required to be listed on the Revenue website as they are in receipt of Grant Aid effectively.
3. If you are availing of the scheme as an employer and have significant cash reserves there is an expectation you will make best efforts to make up the balance of your staffs net wage through a top up.
4. If the Employer qualifies under the reduction in Turnover all employees are entitled to be considered for the scheme.
5. The scheme is not age specific and can be claimed by someone in receipt of State Pension if they qualify.
6. When calculating the top up payment to employees (if one is being made) it is important to note that the difference between the average net and the subsidy received is the maximum "gross" that can be paid. Therefore there will be cases even when the employer tops up the payment fully that the employee will not receive the exact same net as prior to the scheme.
7. It is important to refer back to the documents we sent to you last week for more detail and specifically to the most up to date revenue document attached. We would also recommend that you contact your Payroll software provider for advice as each system runs differently.

If you have any queries on the above please contact us to discuss as we appreciate how stressful this time is for everyone.

We hope you are all staying healthy and safe.

Regards,

George

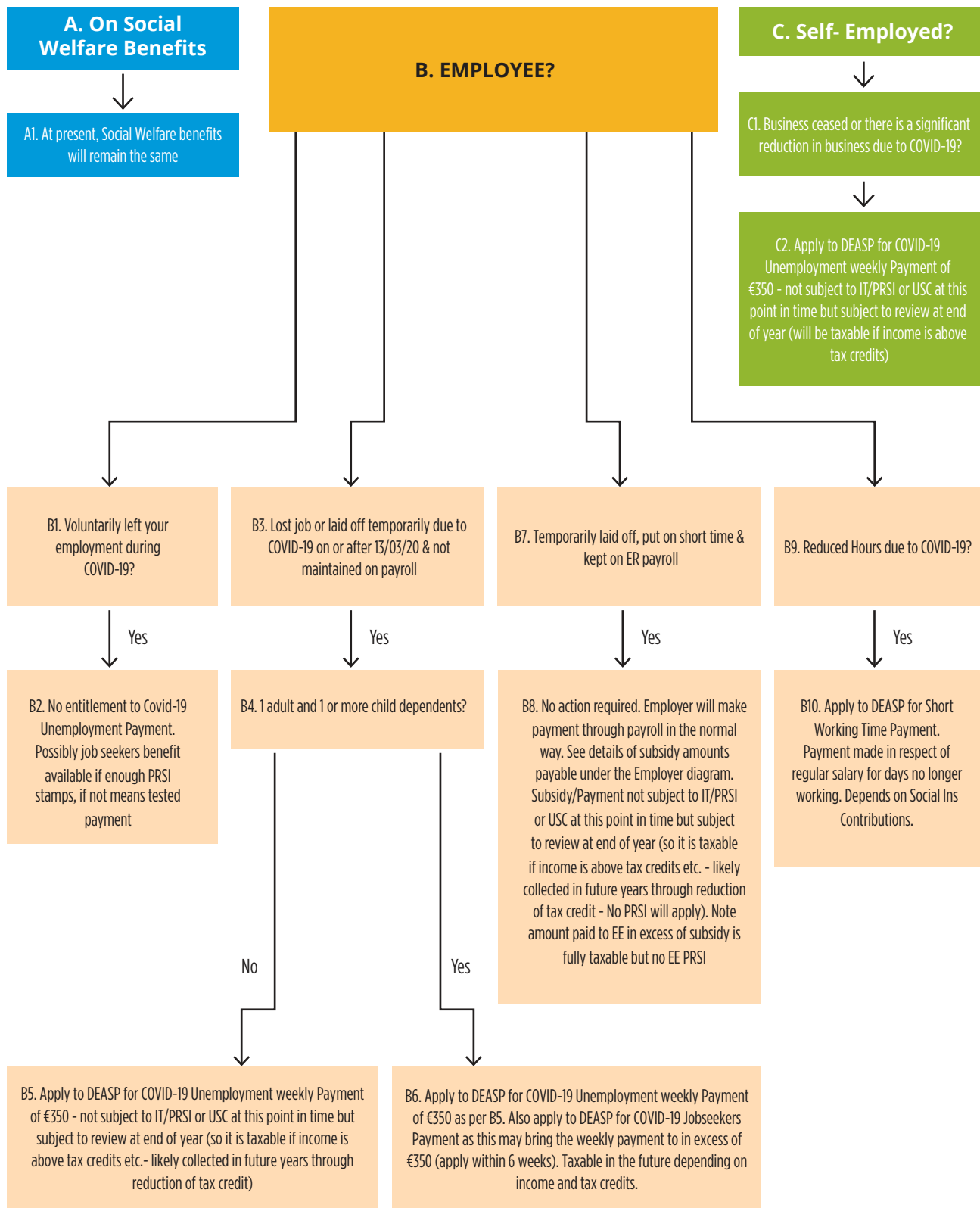


Auditors, Tax & Business Advisers

COVID-19 Income Support Decision Tree

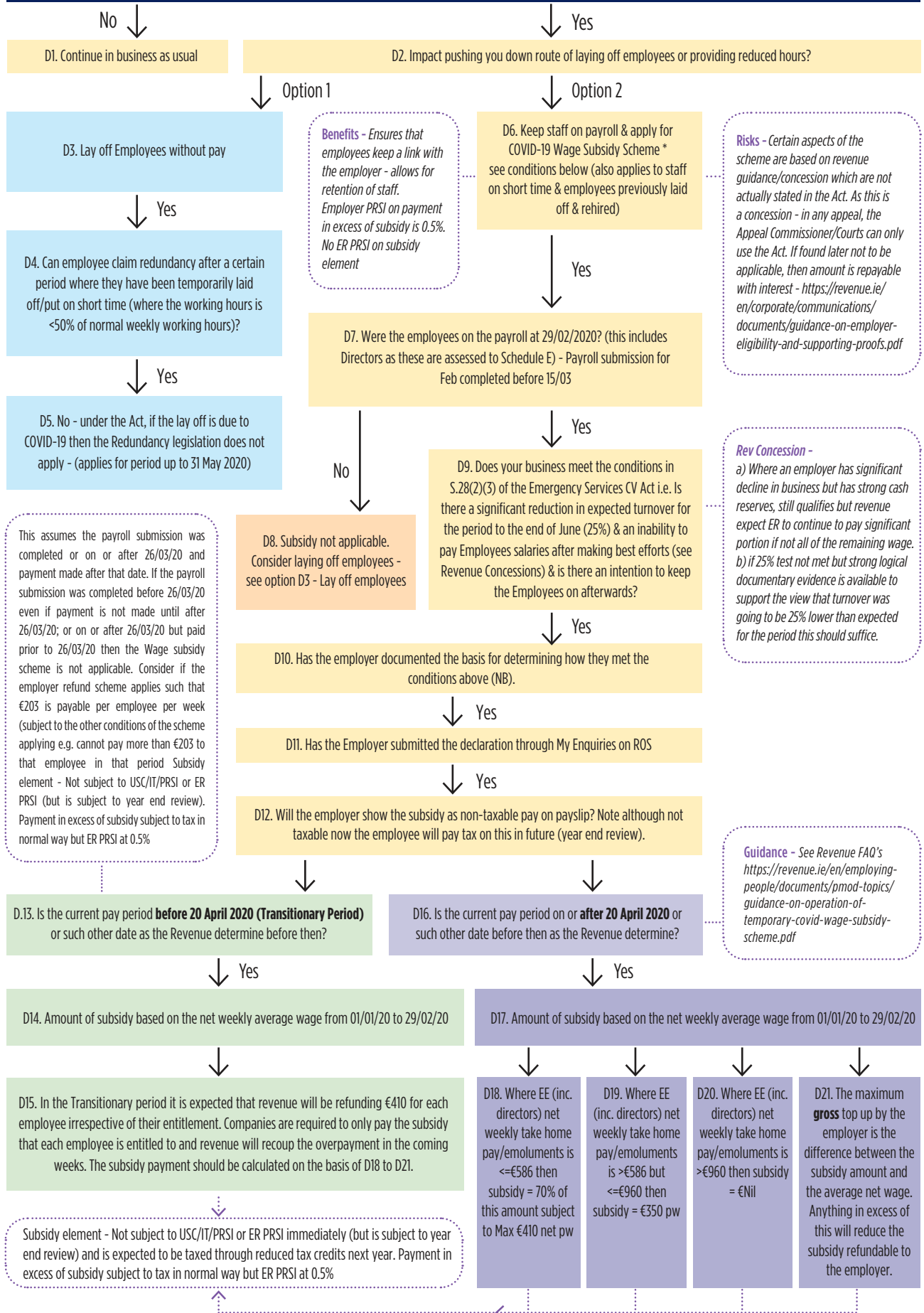
2nd April 2020

COVID-19 INCOME SUPPORT DECISION TREE



Here to support you when you need us most

D. EMPLOYERS - BUSINESS IMPACTED AS A RESULT OF COVID-19?



Here to support you when you need us most



Auditors, Tax & Business Advisers

Unit 11 Woodview Court, Tandy's Lane, Lucan, Co. Dublin, K78 VX38

T +353 1 621 7050 F +353 1 621 1329 info@frisbyassoc.ie

www.frisbyassoc.ie